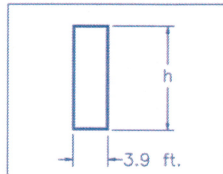
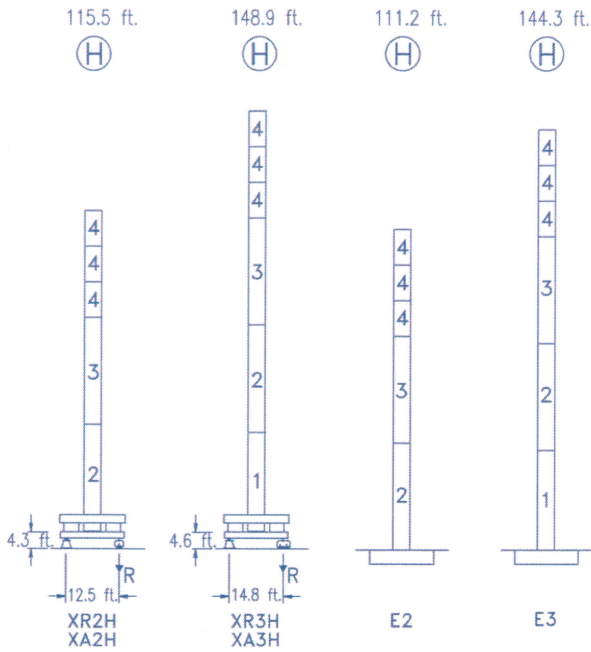
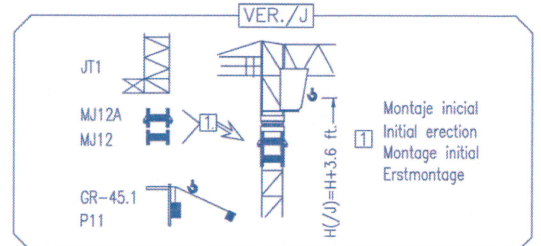
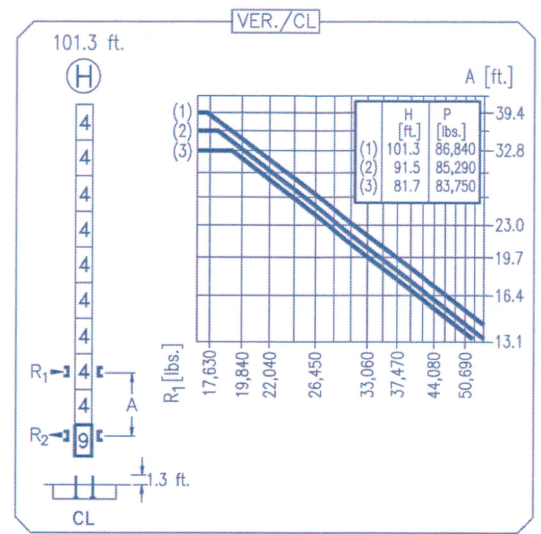
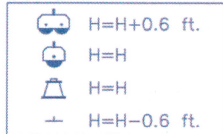

**CE**  
 DIN 15018 H1 B3

R	R(Cmax)	Cmax	65.6	82.0	98.4	114.8	123.0	131.2	139.4	147.6	155.8	164.0	172.2	ft.	lbs.
172.2	87.9 ft.	5,510	5,510	5,510	4,830	4,010	3,700	3,420	3,170	2,950	2,750	2,580	2,420		
	46.6 ft.	11,020	7,450	5,730	4,580	3,790	3,480	3,200	2,950	2,730	2,530	2,360	2,200		
164.0	101.0 ft.	5,510	5,510	5,510	5,510	4,740	4,360	4,060	3,770	3,500	3,280	3,090			
	53.5 ft.	11,020	8,730	6,740	5,540	4,520	4,140	3,830	3,550	3,280	3,060	2,860			
155.8	101.4 ft.	5,510	5,510	5,510	5,510	4,760	4,390	4,080	3,790	3,530	3,310				
	53.5 ft.	11,020	8,770	6,790	5,470	4,540	4,170	3,860	3,570	3,310	3,090				
147.6	106.3 ft.	5,510	5,510	5,510	5,510	5,050	4,650	4,320	4,010	3,750					
	56.1 ft.	11,020	9,260	7,160	5,800	4,830	4,430	4,100	3,790	3,530					
139.4	110.2 ft.	5,510	5,510	5,510	5,510	5,240	4,850	4,500	4,190						
	58.4 ft.	11,020	9,650	7,470	6,040	5,020	4,630	4,280	3,970						
131.2	112.8 ft.	5,510	5,510	5,510	5,510	5,400	4,980	4,630							
	59.7 ft.	11,020	9,920	7,690	6,210	5,180	4,760	4,410							
123.0	112.2 ft.	5,510	5,510	5,510	5,510	5,380	4,960								
	59.4 ft.	11,020	9,850	7,650	6,170	5,160	4,740								
114.8	114.8 ft.	5,510	5,510	5,510	5,510	5,510									
	60.7 ft.	11,020	10,090	7,850	6,350	5,290									
98.4	98.4 ft.	5,510	5,510	5,510	5,510										
	61.0 ft.	11,020	10,160	7,890	6,390										



N	Ref.	h
1	MT123	33.1 ft.
2	MH124A	38.7 ft.
3	MH124-1	38.7 ft.
4	MH121	9.8 ft.
9	CL20	7.2 ft.

MH124=(4)MH121-0.6 ft.



<b>R. máx.</b>	En servicio In operation En service In Betrieb	<b>XR2H ..... 96,650 lbs.</b>
		<b>XR3H .... 144,620 lbs.</b>

<b>R. máx.</b>	Fuera de servicio Out of service Hors service Ausser Betrieb	<b>XR2H ..... 89,730 lbs.</b>
		<b>XR3H .... 101,630 lbs.</b>

**CS2-1.9**  
3 hp.  
66 ft./min  
189 ft./min

**CFU-2.2**  
3 hp.  
0 ⇄ 262 ft./min

**GR-9.0**  
66 ft.lbs.  
0 ⇄ 0.8 rpm

<b>TS2-4.5</b> 2x33 ft.lbs.	<b>TS2-5.5</b> 2x40 ft.lbs.
0 ⇄ 78 ft./min	
<b>XR2H</b>	<b>XR3H</b>

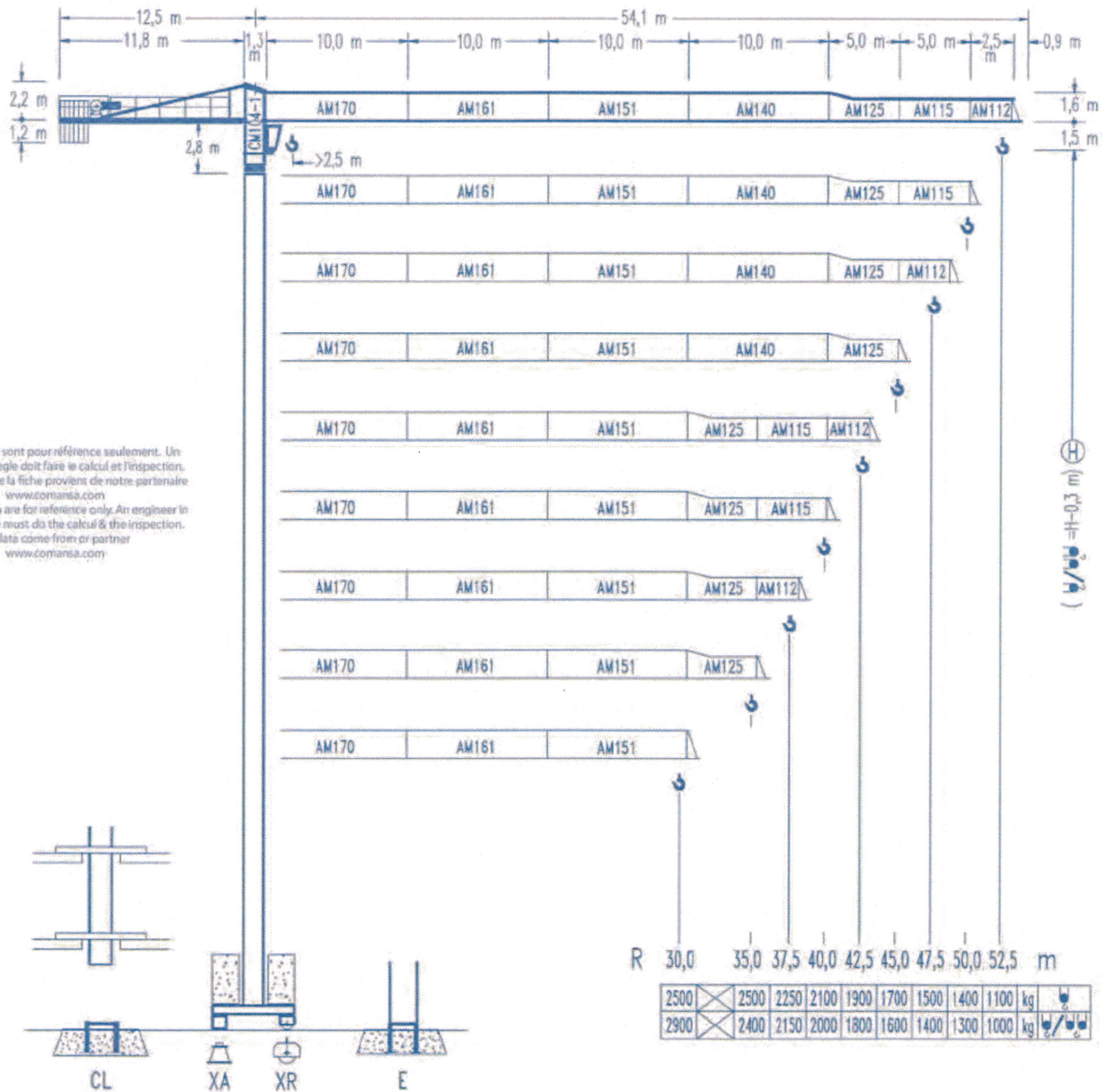
**ES3-18-12**  
29 hp.

		I	II	III
	ft./min	32	126	252
	lbs.	5,510	5,510	2,860
	ft./min	16	63	126
	lbs.	11,020	11,020	5,730

**EFU2-18-12**  
24 hp.


Tensión de alimentación Operating voltage Tension de service Betriebsspannung	<b>480 V</b> <b>3 ph</b> <b>60 Hz</b>
--	---

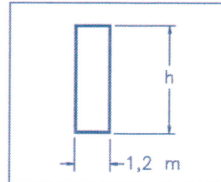
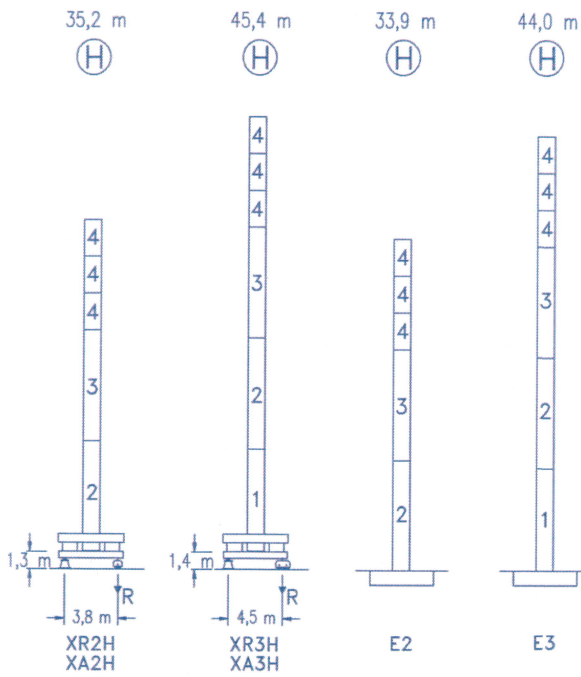
Opcional  
Optional  
En option  
Kaufoption



\*Les données sont pour référence seulement. Un ingénieur en règle doit faire le calcul et l'inspection. L'information de la fiche provient de notre partenaire [www.comansa.com](http://www.comansa.com)  
 \*All data shown are for reference only. An engineer in good standing must do the calcul & the inspection. All data come from our partner [www.comansa.com](http://www.comansa.com)

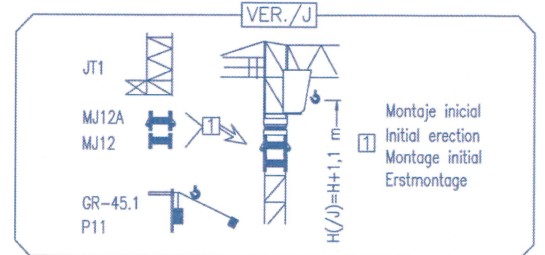
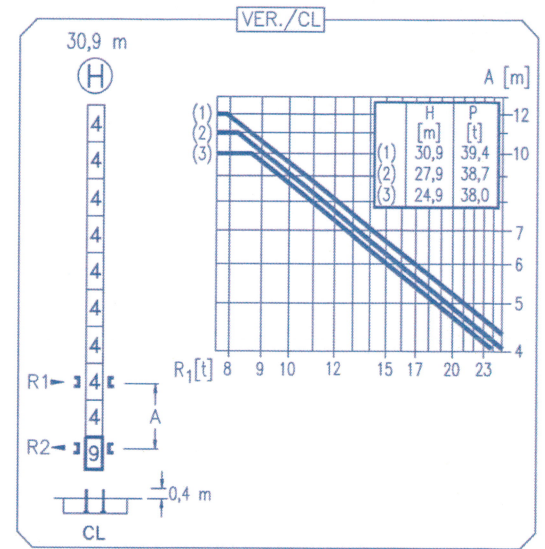
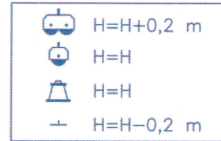
 CE  
 DIN 15018 H1 B3

R	R(Cmax)	Cmax	20,0	25,0	30,0	35,0	37,5	40,0	42,5	45,0	47,5	50,0	52,5	m	kg
52,5	26,8 m	2500	2500	2500	2190	1820	1680	1550	1440	1340	1250	1170	1100		
	14,2 m	5000	3380	2600	2080	1720	1580	1450	1340	1240	1150	1070	1000		
50,0	30,8 m	2500	2500	2500	2500	2150	1980	1840	1710	1590	1490	1400			
	16,3 m	5000	3960	3060	2470	2050	1880	1740	1610	1490	1390	1300			
47,5	30,9 m	2500	2500	2500	2500	2160	1990	1850	1720	1600	1500				
	16,3 m	5000	3980	3080	2480	2060	1890	1750	1620	1500	1400				
45,0	32,4 m	2500	2500	2500	2500	2290	2110	1960	1820	1700					
	17,1 m	5000	4200	3250	2630	2190	2010	1860	1720	1600					
42,5	33,6 m	2500	2500	2500	2500	2380	2200	2040	1900						
	17,8 m	5000	4380	3390	2740	2280	2100	1940	1800						
40,0	34,4 m	2500	2500	2500	2500	2450	2260	2100							
	18,2 m	5000	4500	3490	2820	2350	2160	2000							
37,5	34,2 m	2500	2500	2500	2500	2440	2250								
	18,1 m	5000	4470	3470	2800	2340	2150								
35,0	35,0 m	2500	2500	2500	2500	2500									
	18,5 m	5000	4580	3560	2880	2400									
30,0	30,0 m	2500	2500	2500	2500										
	18,6 m	5000	4610	3580	2900										



N	Ref.	h
1	MT123	10,1 m
2	MH124A	11,8 m
3	MH124-1	11,8 m
4	MH121	3,0 m
9	CL20	2,2 m

MH124=(4)MH121-0,2 m



<b>R. máx.</b>	En servicio In operation En service In Betrieb	XR2H ..... 46,0 t
		XR3H ..... 49,0 t

<b>R. máx.</b>	Fuera de servicio Out of service Hors service Ausser Betrieb	XR2H ..... 50,9 t
		XR3H ..... 72,4 t

**CS2-1.9**

1,9 kW

16 m/min  
48 m/min

**CFU-2.2**

2,2 kW

0 ⇄ 80 m/min

**GR-9.0**

90 Nm

0 ⇄ 0,7 rpm

<b>TS2-4.5</b>	<b>TS2-5.5</b>
2x45 Nm	2x55 Nm
0 ⇄ 20 m/min	
<b>XR2H</b>	<b>XR3H</b>

250 m

**ES3-18-12**

18 kW

		I	II	III
	m/min	8	32	64
	kg	2500	2500	1300
	m/min	4	16	32
	kg	5000	5000	2600

250 m

**EFU2-18-12**

18 kW

Tensión de alimentación Operating voltage Tension de service Betriebsspannung	<b>400 V</b> <b>3 ph</b> <b>50 Hz</b>
--	---

Optional Optional En option Kaufoption	<b>*</b>
---	----------