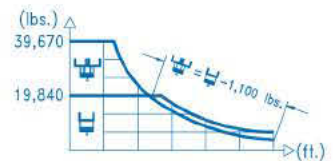


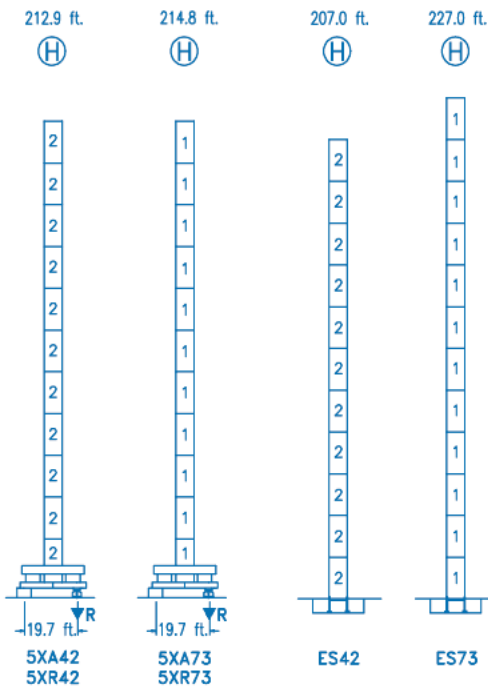
*Les données sont pour référence seulement. Un ingénieur en règle doit faire le calcul et l'inspection. L'information de la fiche provient de notre partenaire www.comansa.com.

*All data shown are for reference only. An engineer in good standing must do the calcul & the inspection. All data come from or partner www.comansa.com.

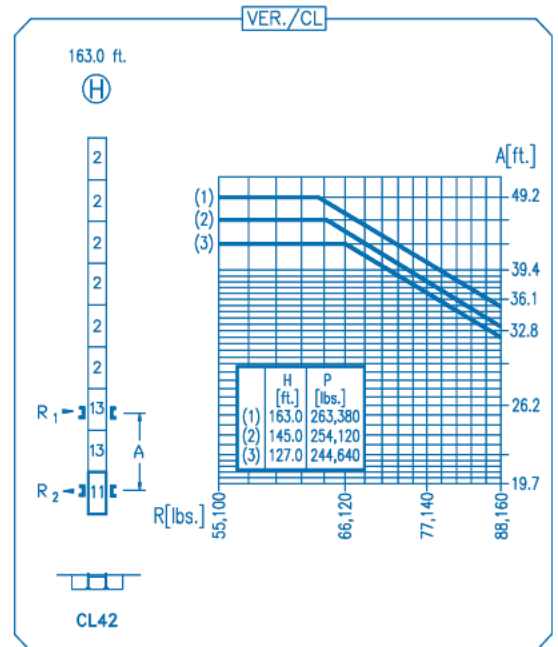
CE
DIN 15018 H1 B3

R														H		
262.4	54.4	65.6	82.0	98.7	100.0	111.5	131.2	144.3	164.0	177.1	196.8	209.9	229.6	242.7	262.4	ft.
	39,670	32,010	24,720	19,840	19,840	17,580	14,680	13,190	11,430	10,470	9,280	8,610	7,750	7,260	6,610	lbs.
242.7	59.0	65.6	82.0	106.3	110.2	111.5	131.2	144.3	164.0	177.1	196.8	209.9	229.6	242.7		ft.
	39,670	35,220	27,250	19,840	19,840	19,560	16,350	14,710	12,760	11,700	10,380	9,640	8,690	8,150		lbs.
229.6	71.2	82.0	98.4	111.5	111.5	129.9	135.1	144.3	164.0	177.1	196.8	209.9	229.6			ft.
	39,670	33,750	27,420	23,730	19,840	19,840	18,440	16,030	14,720	13,100	12,190	11,020				lbs.
209.9	71.5	82.0	98.4	111.5	111.5	130.9	136.4	144.3	164.0	177.1	196.8	209.9				ft.
	39,670	33,960	27,590	23,880	19,840	19,840	18,670	16,220	14,910	13,270	12,340					lbs.
196.8	73.8	82.0	98.4	111.5	111.5	135.5	142.0	144.3	164.0	177.1	196.8					ft.
	39,670	35,240	28,660	24,830	19,840	19,840	19,500	16,970	15,590	13,880						lbs.
177.1	72.8	82.0	98.4	111.5	111.5	133.5	140.7	144.3	164.0	177.1						ft.
	39,670	34,690	28,200	24,430	19,840	19,840	19,300	16,780	15,430							lbs.
164.0		76.4	82.0	98.4	111.5	111.5	140.8	148.9	164.0							ft.
		39,670	36,710	29,860	25,900	19,840	19,840	17,850								lbs.
131.2		80.4	82.0	98.4	111.5	111.5	131.2									ft.
		39,670	38,730	31,550	27,360	23,140										lbs.





N Ref.	φ	h
1 S35	8.2	18.0
2 D23	6.6	18.0
13 D23A	6.6	18.0
11 CLD23A	6.6	10.2



R. máx.	En servicio In operation En service In Betrieb	5XR42 ... 294,010 lbs.	R. máx.	Fuera de servicio Out of service Hors service Ausser Betrieb	5XR42 247,290 lbs.
		5XR73 ... 203,930 lbs.			5XR73 288,500 lbs.

CFU-7.5
10 hp.

0 ↻ 308 ft./min

GR-12
4 x 88 ft.lbs.

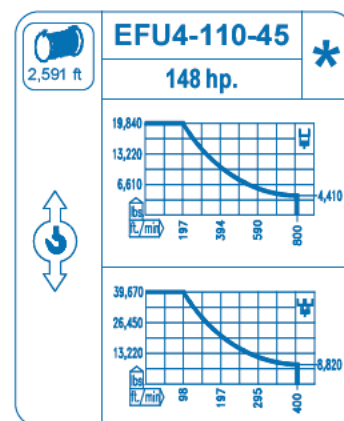
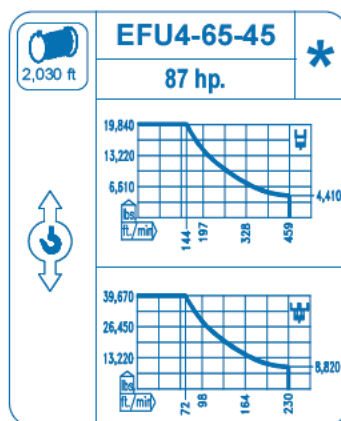
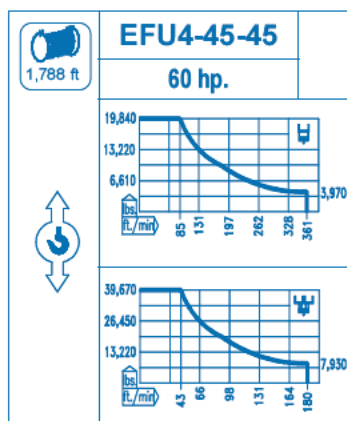
0 ↻ 0.7 rpm

TRA-7.5
2 x 55 ft.lbs.

0 ↻ 78 ft./min

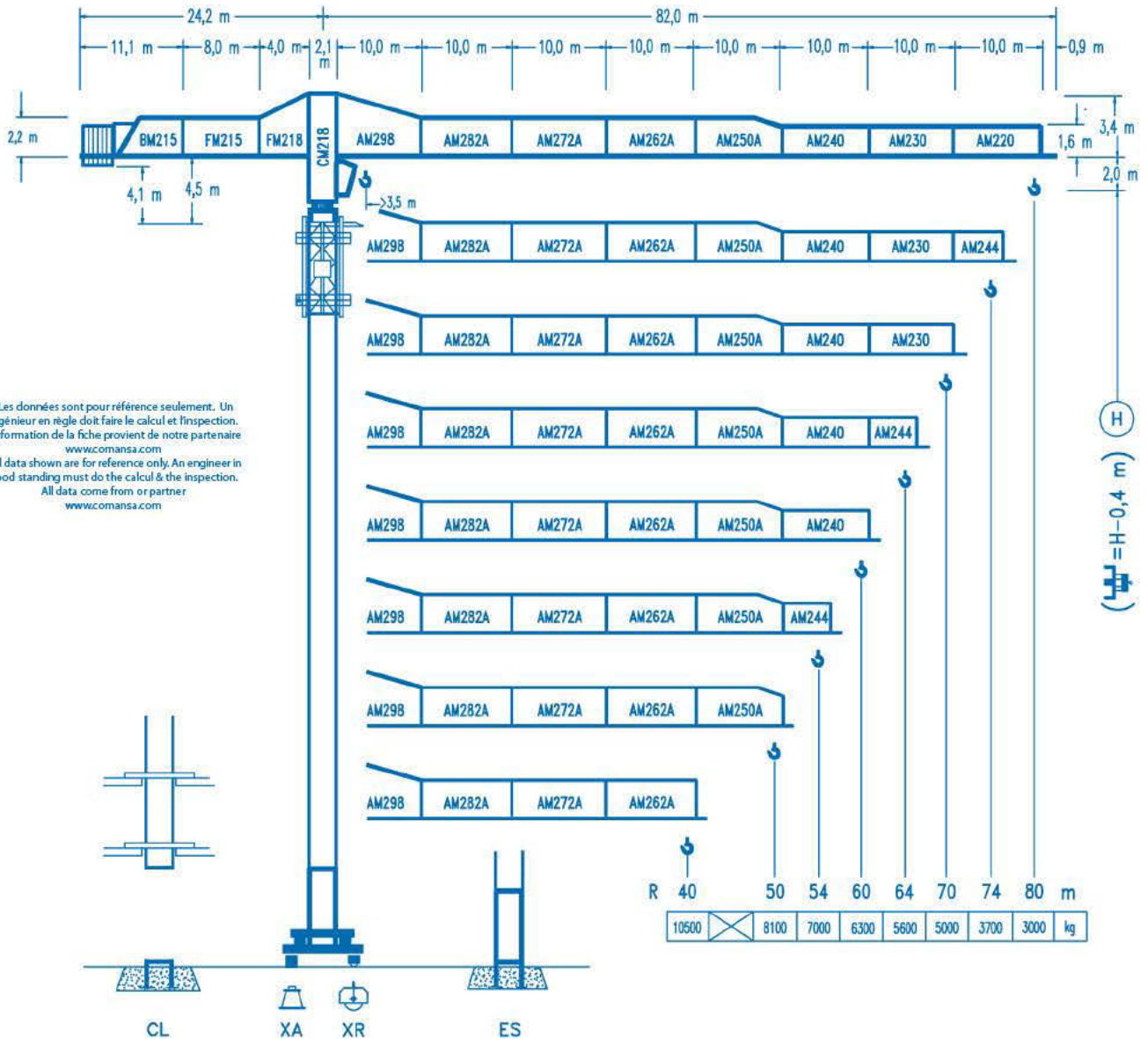
TRA-7.5VC
2 x 55 ft.lbs.

0 ↻ 78 ft./min





Tensión de alimentación Operating voltage Tension de service Betriebsspannung	480 V 3 ph 60 Hz
--	---

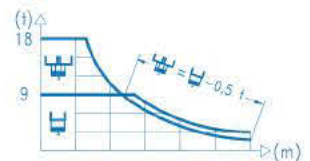
Opcional Optional En option Kaufoption	*
---	----------

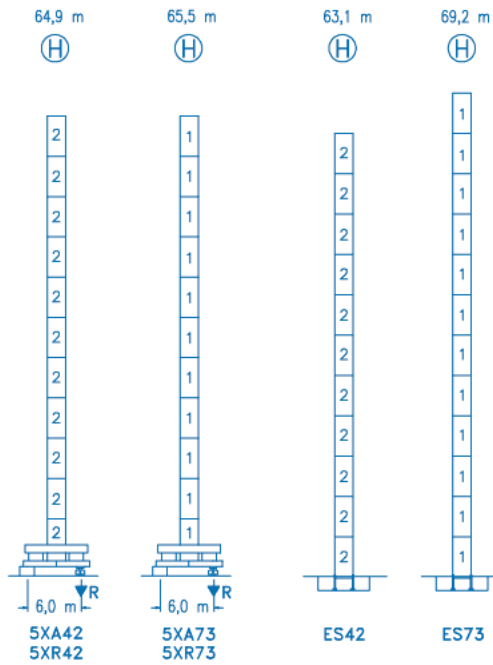


*Les données sont pour référence seulement. Un ingénieur en règle doit faire le calcul et l'inspection. L'information de la fiche provient de notre partenaire www.comansa.com
 *All data shown are for reference only. An engineer in good standing must do the calcul & the inspection. All data come from or partner www.comansa.com

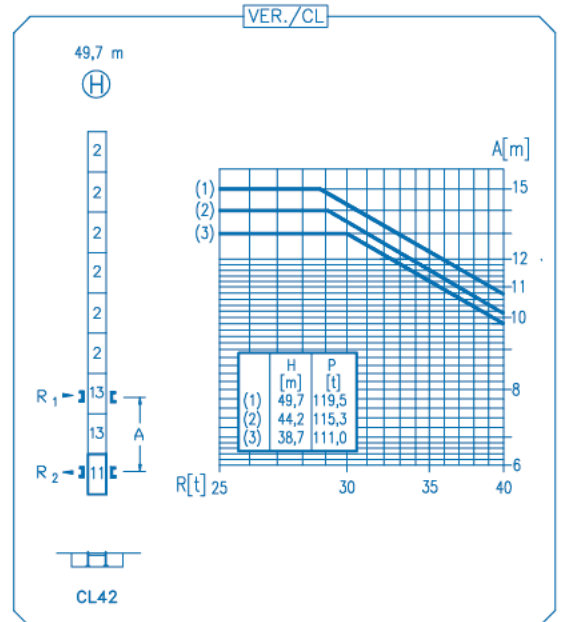
CE
 DIN 15018 H1 B3

R																																
80	16,6	20	25	30,1	30,5	34	40	44	50	54	60	64	70	74	80	m	18000	14525	11215	9000	9000	7975	6660	5985	5185	4750	4210	3905	3515	3295	3000	kg
74	18,0	20	25	32,8	33,6	34	40	44	50	54	60	64	70	74	m	18000	15980	12365	9000	9000	8875	7420	6675	5790	5310	4710	4375	3945	3700	kg		
70	21,7	25	30	34	39,6	41,2	44	50	54	60	64	70	m	18000	15315	12440	10765	9000	8365	7275	6680	5945	5530	5000	kg							
64	21,8	25	30	34	39,9	41,6	44	50	54	60	64	m	18000	15410	12520	10835	9000	9000	8470	7360	6765	6020	5600	kg								
60	22,5	25	30	34	41,3	43,3	44	50	54	60	m	18000	15990	13005	11265	9000	8850	7700	7075	6300	kg											
54	22,2	25	30	34	40,7	42,9	44	50	54	m	18000	15740	12795	11085	9000	9000	8755	7615	7000	kg												
50	23,3	25	30	34	42,8	45,4	50	m	18000	16655	13550	11750	9000	9000	8100	kg																
40	24,5	25	30	34	40	m	18000	17575	14315	12415	10500	kg																				





N	Ref.	φ	h
1	S35	2,5	5,5
2	D23	2,0	5,5
13	D23A	2,0	5,5
11	CLD23A	2,0	3,1



R. máx.	En servicio In operation En service In Betrieb	5XR42 133,4 t
		5XR73 137,9 t

R. máx.	Fuera de servicio Out of service Hors service Ausser Betrieb	5XR42 112,2 t
		5XR73 130,9 t

CFU-7.5

7,5 kW

0 ↻ 94 m/min

GR-12

4 x 120 Nm

0 ↻ 0,7 rpm

TRA-7.5

2 x 75 Nm

0 ↻ 20 m/min

TRA-7.5VC

2 x 75 Nm

0 ↻ 20 m/min

EFU4-45-45

45 kW

EFU4-65-45

65 kW

EFU4-110-45

110 kW

Tensión de alimentación Operating voltage Tension de service Betriebsspannung	400 V 3 ph 50 Hz
--	---

Opcional Optional En option Kaufoption	*
---	----------